



ROBOTICS, Inc.

Program-A-Flow™ Metering Systems

PRODUCT DATA

ROBOTICS, Inc. Program-A-Flow™ Metering Systems provide precisely controlled volumetric dispensing of adhesives and sealants.

Program-A-Flow™

The patented "next-generation" Program-A-Flow™ (PAF) is a positive displacement metering system for automated dispensing. It enables your dispensing equipment to live up to its potential by compensating for many of the variables encountered in real-world dispensing applications.

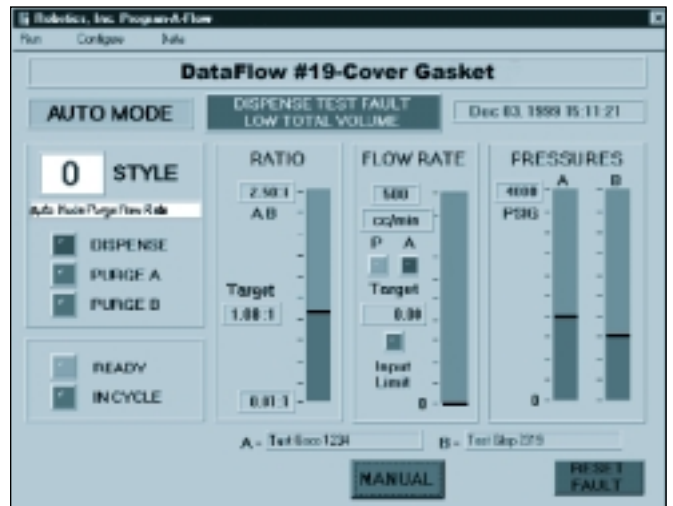
Precise & Consistent Beads

PAF varies the amount of material metered depending on these variables via its communication with the robot program and its internal feedback. The end result is a precise and consistent bead of material regardless of:

- Robot speed changes (e.g. slower in a tight radius than when dispensing a straight line)
- Changes in material viscosity due to temperature, aging, or batch-to-batch differences

Three Products

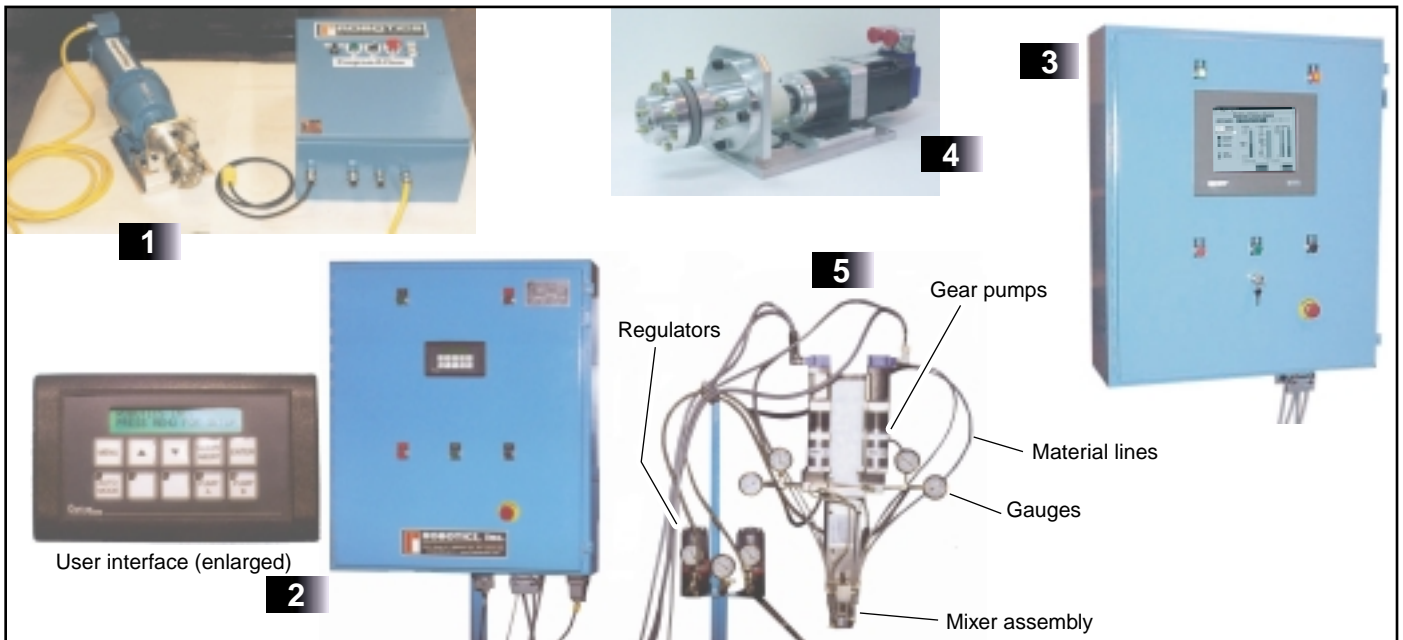
The PAF line consists of the SetFlow™, SmartFlow™, and DataFlow™ models depending on user requirements (see reverse for product comparison).



The PAF DataFlow™ main touch-panel screen

Key Benefits

- Achieve precision and consistent volumetric dispensing control
- Meter or meter/mix a wide variety of materials
- Easy to use and configure
- Data collection for SPC analysis (DataFlow™ model)
- Network capable (DataFlow™ model)
- Multiple PAF configuration will proportionally mix and meter two-part (or more) materials



Program-A-Flow™ models: (1) SetFlow™ control and motor/gear pump; (2) SmartFlow™ control with digital display enlarged; (3) DataFlow™ control. Also: (4) SmartFlow/DataFlow gear pump and motor; (5) typical (and other) component configurations can include stainless steel teflon-lined material lines, regulators, material filters, gauges, gear pumps, ball valves and a static or dynamic mixer assembly.

Which Model PAF do You Need?

SetFlow™

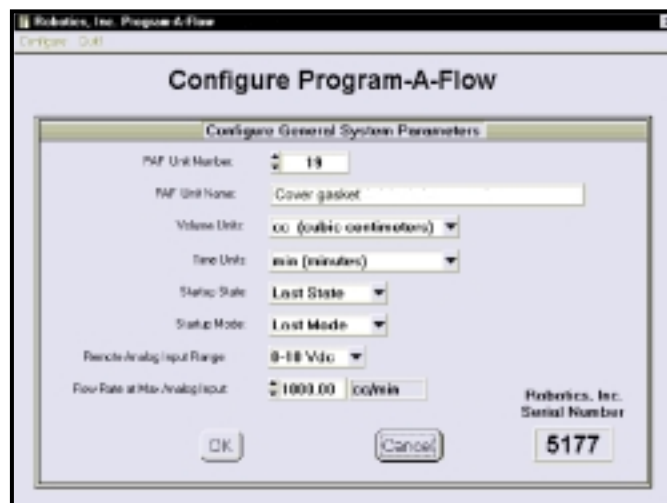
Best for dispensing applications requiring a single flow rate without feedback.

SmartFlow™

For applications not requiring data collection. PAF adjusts itself based on its own feedback to maintain a consistent bead. User configuration is via PLC.

DataFlow™

For applications requiring data collection (e.g. SPC) or frequent and sophisticated user configuration via touch-screen PC interface.



The full-featured DataFlow™ offers many user-defined customization interface screens.

Systems & Support

Robotics, Inc. has decades of experience designing and building automated dispensing systems. We provide complete system solutions, including start-up and installation assistance, training, field service support, and complete documentation. We provide both standard systems and custom-designed solutions. Dependent on your specific project considerations, Robotics Inc. staff will design and build a system that is right for you.

Information

For more information on Program-A-Flow™ Metering Systems or other products and services, contact a Representative from our Technical Sales Department:



Headquarters

2421 Route 9
Ballston Spa, New York 12020
Phone (518) 899-4211 or (800) 876-2684
Fax (518) 899-4230
www.Roboticsinc.com
Email: Info@Roboticsinc.com

Midwest Regional Sales Office

Phone (248) 743-2920
Fax (248) 743-2923

Electrical/Electronics Sales Inquiries

Phone (518) 899-4211 or (800) 876-2684
Fax (518) 899-4230

Features & Benefits

	SetFlow™	SmartFlow™	DataFlow™
Precise positive displacement flow control	•	•	•
Meters wide variety of materials	•	•	•
Integrates with most RI or other dispense systems	•	•	•
Patented gear pump design minimizes material wear on system	•	•	•
Robot digital control interface	•	•	•
Drive fault sensing automatically shuts down the system to prohibit system damage	•	•	•
Available as 1-part or 2-part system	•	•	•
Resolver feedback (motor to drive electronics)		•	•
Plug-in wiring for interface to system control		•	•
Pre-configured system control software included		•	•
Analog or manual pre-set flow rate control		•	•
Auto/manual operation modes		•	•
Flow rate & mix ratio control		•	•
System supports non-standard pumps and flow rates		•	•
Flexible ratio settings for 2-part systems from 0.01:1 to 99.99:1		•	•
User interface for programmable configuration		•	GUI
User-friendly touch-screen GUI (graphical user interface) and operation for EASY configuration			•
Network ready (Windows NT®)			•
Configurable real-time meters and scaling			•
Programmable pressure ranges with alarm output			•
Up to 31 dispense styles (with independent process limit settings for data collection, monitoring, and quality control)			•
Multiple data file handling options (daily, weekly, or number of parts)			•
Configurable SPC data collection (part ID, dispense style, cycle count, time & date, and dispense volumes)			•
Feedback from drive electronics to robot control system			•

Subject to change without prior notice.

Since 1971, Robotics Inc. has designed, built, and supported automated dispensing around the world!

Windows NT is a registered trademark of Microsoft Corporation. All other trademarks shown are the property of Robotics, Incorporated.