



**ROBOTICS, Inc. VisionCheck™ Vision Inspection System monitors the quality of dispensing applications. The VisionCheck™ System is appropriate for high-volume applications requiring data collection, Stastical Process Control (SPC) analysis, and a high degree of quality control.**

### VisionCheck™ System

VisionCheck™ is a conveyerized vision inspection system. We have designed this system specifically for inspecting various fluid dispensing applications for characteristics such as location, continuity, knit-lines, height, drop coverage/area, and other measurements.

VisionCheck™ is readily integrated into any on-line dispensing or assembly application. The system includes a PC (color monitor, hard drive, keyboard, and mouse), camera(s), lighting, enclosures, and product documentation. Lighting and cameras are configured according to specific applications.

This standard system has various options:

- Part-reject identification for manual removal
- Data collection capability
- Analysis & report generation capability
- Various real-time data output capabilities
- May be completely customized



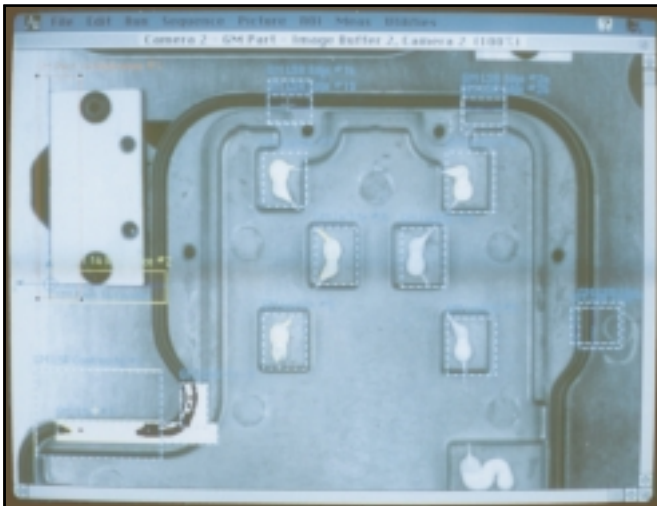
Robotics, Inc. VisionCheck™ inspection system (tower). Cantilever unit on left of tower is an optional part reject identification system for manual part removal.

### Benefits

- Cost effective alternative to human inspection:
  - in large production volume situations
  - when measurement is beyond human eye capability
- Adds extra level of quality control in "TQM" and "zero defect" manufacturing environments
- Aids manufacturing process by collecting data on PC for SPC analysis

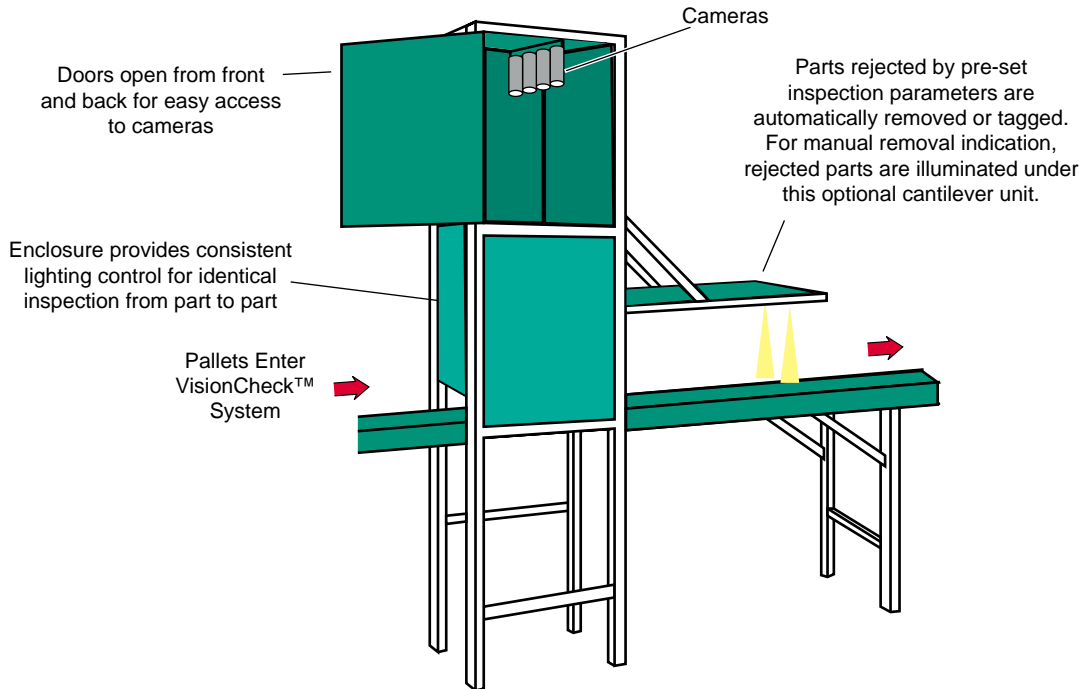
### Features

- Modular design for broad range of part/pallet sizes
- Can be integrated with fully-automated line or used as a stand-alone system
- Easy PC menu driven application set-up
- High level programming language available for custom applications
- Part-failure indicator area for manual part removal
- Up to 4 cameras supported
- Calibration compensation for perspective distortion
- Synchronous or asynchronous conveyor
- Lighting is customized to differentiate between low contrast regions



Computer screen showing a part inspection

## Typical Layout



Layout shown is typical. Other models and custom configurations are available.

## Information

For more information on Vision Inspection or our other products and services, contact a Representative from our Technical Sales Department:



**ROBOTICS, Inc.**

### Headquarters

2421 Route 9  
Ballston Spa, New York 12020  
Phone (518) 899-4211 or (800) 876-2684  
Fax (518) 899-4230  
www.Roboticsinc.com  
Email: Info@Roboticsinc.com

### Midwest Regional Sales Office

Phone (248) 743-2920  
Fax (248) 743-2923

### Electrical/Electronics Sales Inquiries

Phone (518) 899-4211 or (800) 876-2684  
Fax (518) 899-4230

## Systems & Support

Robotics, Inc. has decades of experience designing and building automated dispensing systems. We provide complete system solutions, including start-up and installation assistance, training, field service support, and complete documentation. We provide both standard systems and custom-designed solutions. Dependent on your specific project considerations, Robotics Inc. staff will design and build a system that is right for you.

### VisionCheck™ Specifications\*

<b>Accuracy</b>	Up to 0.0001"
<b>Space Requirements</b>	Vary according to application
<b>Min. RAM</b>	24 Mb, expandable to 256 Mb
<b>Processing Speed</b>	10 to 50 msecs (full frame) 2 to 3 msecs (small region)
<b>Work Envelope</b>	Varies according to application
<b>Lighting</b>	Customized to application

\*Specifications subject to change without prior notice.

*Since 1971, Robotics Inc. has designed, built, and supported automated dispensing around the world!*

All trademarks shown are the property of Robotics, Incorporated.